

# General Catalog

Electrofusion fittings

2023



# INTRODUCTION

## Company Introduction

To help customers succeed in the field of plastic pipe joining, WELPING had been focusing on thermoplastic welding equipment and pipe fittings developing, manufacturing and selling since 2005. We aim to bring industrial level design, performance and quality together, to help you build reputation.

To suit different welding applications and market requirements, we are offering different level items represented by brand WELPING, YOVIDA, VOLKIR and DOWELD. Brand WELPING enjoys a high reputation for exportation, benefitting from the steady product quality and performance. Thanks to our experienced engineers, WELPING can help you to quickly decide OEM and ODM requirements. At the same time, we are improving and updating products line to better suit field requirements.

On metal piping applications, we also invested and cooperated with reliable partner factories to provide high quality and cost-competitive products for our esteemed customers.

WELPING knows the importance of fast delivery for our customers. To better shorten production lead time, we consolidate critical production procedures into self-management, like die casting, laser cutting, metal fabrication, CNC machining, powder coating etc. Standard items and light-OEM items, WELPING can finish in around 10-15 days.







**Coupler**

SDR-17					
DN	D	T	L	L1	L2
315	355	20	234	117	66
355	399	22	267	133	70
400-B	452	26	240	115	60
400	448	24	300	150	75
450	504	27	310	155	75
500-B	563	31	260	127	73
500	556	28	325	162	85
560	616	28	334	167	100
630-B	706	38	332	166	110
630	696	33	376	188	110
710-B	788	39	350	173	110
710	796	43	429	207	112
800-B	888	44	361	176	111
800	898	49	455	222	122
901	1005	53	528	258	128
1000	1117	58	590	285	160
1200	1342	70	595	290	160
1400	1567	82	567	285	164



**Elbow 90°**

SDR-17				
DN	D	T	L	L1
315	355	20	135	66
355	403	24	140	70
400	456	28	145	75
500	560	30	150	85
630	704	37	185	110
710	795	42	211	112
800	890	45	225	120



**Elbow 45°**

SDR-17				
DN	D	T	L	L1
315	355	20	135	66
355	403	24	140	70
400	456	28	145	75
500	560	30	150	85
630	704	37	185	110
710	792	41	211	112
800	886	43	225	120



**Reducer**

SDR-17						
DN	Dn2/Dn1	Dn2/Dn1	T2/T1	L	L2/L1	L4/L3
355*200	200/355	240/399	20/22	277	105/140	55/65
355*250	250/355	294/399	22/22	297	125/140	70/70
355*315	315/355	363/399	24/22	285	135/140	65/70
400*250	250/400	294/448	22/24	310	125/140	80/75
400*315	315/400	365/448	25/24	315	135/140	80/75
500*315	315/500	365/556	25/28	320	133/140	78/83
500*400	400/500	450/556	25/28	330	145/150	73/81
710*500	440/710	500/796	30/43	460	157/270	115/115
710*630	556/710	630/796	37/43	465	184/250	115/115
800*630	556/800	630/898	37/49	500	184/280	120/120
800*710	626/800	710/898	42/49	505	215/285	120/120



**Equal Tee**

SDR-17					
Dn	D	T	L	L1	L2
315	355	20	518	135	66
355	405	25	585	140	75
400	454	27	620	143	75
500	560	30	737	150	85
630	704	37	932	187	110
710	788	39	996	210	125
800	888	44	1120	225	130



**Flange Adapter**

SDR-17						
Dn	D	T	T1	L	L1	L2
355	395	20	36.5	150	132	80
400	444	22	37	150	135	76
450	498	24	43	155	140	77
500	552	26	43	190	170	105
560	620	30	48	205	180	95
630	680	25	60	205	190	115
710	772	31	71	270	245	150
800	872	36	75	273	250	158
900	995	47	78	300	285	180
1000	1105	51	88	342	325	138



**Reducing Tee**

SDR-17					
Dn	D	T	L	L1	L2
315*90	355	20	398	135	66
315*110	355	20	398	135	66
315*160	355	20	398	135	66
315*200	355	20	518	135	66
315*250	355	20	518	135	66
355*110	405	25	585	140	75
355*160	405	25	585	140	75
355*200	405	25	585	140	75
355*250	405	25	585	140	75
355*315	405	25	585	140	75
400*110	454	27	447	143	75
400*125	454	27	447	143	75
400*160	454	27	447	143	75
400*200	454	27	447	143	75
400*250	454	27	620	143	75
400*315	454	27	620	143	75
500*110	560	30	500	150	85
500*160	560	30	500	150	85
500*200	560	30	500	150	85
500*250	560	30	500	150	85
500*315	560	30	737	150	85
500*400	560	30	737	150	85
500*450	560	30	737	150	85
630*110	702	36	710	184	110
630*160	702	36	710	184	110
630*200	702	36	710	184	110
630*250	702	36	710	184	110
630*315	702	36	710	184	110
630*400	702	36	710	184	110
630*500	704	37	932	187	110
710*200	792	41	792	214	112
710*315	792	41	792	214	112
710*400	792	41	792	214	112
710*500	792	41	792	214	112
800*160	890	45	816	227	120
800*200	890	45	816	227	120
800*315	890	45	816	227	120
800*400	890	45	816	227	120
800*500	890	45	816	227	12
900*710	1005	53	1092	260	140
1000*710	1117	58	1150	288	145



**Coupler**

SDR-11					
Dn	D	T	L	L1	L2
50	66	8	113	56	30
63	79	8	112	56	30
75	93	9	124	62	32
90	110	10	139	69	40
110	136	13	148	74	40
125	151	13	158	79	40
140	168	14	168	84	40
160	192	16	173	86	50
180	214	17	191	94	47
200	236	18	192	96	53
225	267	21	218	109	55
250	292	21	220	110	63
280	322	21	215	107	70
315	371	28	265	132	65
315-B	371	28	235	113	60
355	419	32	267	133	70
400-B	476	39	240	113	60
400	468	34	300	147	75
450	534	42	310	155	75
500-B	592	46	260	124	73
500	572	36	325	160	85
560	651	47	333	170	100
630	731	50.5	375	188	110
710	832	61	432	209	112
800	936	68	456	224	126
900	1064	82	528	258	128
1000	1178	89	590	289	165
1200	1218	109	595	290	160



**Elbow 90°**

SDR-11				
Dn	D	T	L	L1
50	66	8	54	25
63	79	8	54	25
75	91	8	60	30
90	110	10	68	40
110	132	11	74	40
125	151	13	80	40
140	166	13	75	35
160	190	15	95	50
200	238	19	105	55
225	267	21	110	65
250	294	22	125	63
315	375	30	135	70
355	419	32	140	70
400	472	36	145	75
500	587	43.5	151	85
630	735	55	185	110



**Reducer**

SDR-11					
Dn2/Dn1	D2/D1	T2/T1	L	L2/L1	L4/L3
50/63	66 /79	8 /8	114	53 /53	23 /26
50/75	66 /91	8 /8	121	53 /57	26 /31
63/75	79 /91	8 /8	122	54 /57	27 /31
50/90	66 /110	8 /10	133	55 /65	30 /26
63/90	79 /110	8 /10	135	55 /65	26 /26
75/90	93 /110	9 /10	136	60 /67	33 /45
50/110	66 /134	8 /12	145	55 /72	37 /43
63/110	79 /134	8 /12	142	55 /73	31 /45
75/110	91 /134	8 /12	145	60 /73	38 /44
90/110	110 /134	10 /12	153	70 /73	38 /44
75/125	91 /149	8 /12	155	60 /79	38 /38
90/125	110 /149	10 /12	166	70 /77	38 /40
110/125	132 /149	11 /12	170	75 /78	38 /33
110/140	132 /168	11 /14	175	75 /80	40 /40
50/160	90 /194	20 /17	235	100 /110	72 /46
63/160	91 /192	14 /16	235	100 /110	70 /45
75/160	109 /192	17 /16	184	70 /92	43 /47
90/160	110 /194	10 /17	183	68 /92	36 /41
110/160	134 /192	12 /16	186	75 /92	50 /50
125/160	149 /192	12 /16	190	80 /90	50 /50
140/160	164 /192	12 /16	194	90 /95	50 /50
50/200	78 /236	14 /18	255	109 /113	81 /43
63/200	79 /236	8 /18	265	109 /113	90 /50
75/200	109 /238	17 /19	260	109 /117	83 /51
90/200	110 /236	10 /18	260	109 /112	50 /60
110/200	134 /236	12 /18	210	75 /100	50 /60
125/200	149 /236	12 /18	215	80 /100	50 /60
140/200	168 /240	14 /20	215	95 /90	47 /60
160/200	192 /238	16 /19	222	93 /102	52 /65
110/225	134 /265	12 /20	223	75 /110	40 /45
160/225	190 /265	15 /20	232	95 /110	55 /57
200/225	236 /265	18 /20	232	103 /110	55 /60
110/250	134 /294	12 /22	250	75 /120	45 /55
160/250	192 /294	16 /22	264	95 /120	50 /65
200/250	236 /294	18 /22	264	105 /120	50 /60
225/250	265 /294	20 /22	252	110 /120	50 /60
160/315	192 /363	16 /24	268	95 /130	55 /60
200/315	236 /363	18 /24	275	105 /130	55 /60
250/315	292 /363	21 /24	290	125 /130	55 /60
200/355	240 /415	20 /30	272	105 /135	63 /68
250/355	296 /415	23 /30	295	123 /135	65 /70
315/355	375 /417	30 /31	285	132 /135	70 /70
315/400	373 /468	29 /34	307	132 /140	72 /80
355/400	417 /470	31 /35	311	150 /140	71 /80
400/450	470 /522	35 /36	315	143 /155	95 /90
400/500	473 /567	35 /35	330	145 /125	80 /90
400/630	478 /731	39 /51	390	160 /193	124 /105
500/630	583 /728	39 /51	391	165 /193	110 /91





**Equal Tee**

SDR-11					
Dn	D	T	L	L1	L2
50	66	8	149	54	27
63	79	8	165	55	28
75	93	9	184	60	29
90	110	10	213	70	40
110	134	12	241	75	40
125	151	13	260	80	40
140	168	14	281	85	40
160	192	16	315	93	50
200	240	20	360	104	55
225	265	20	395	120	55
250	296	23	437	125	63
315	371	28	518	133	70
355	419	32	577	140	70
400	474	37	623	143	70
450	525	37.5	703	156	75
500	587	43.5	725	151	85
560	640	43	803	168	100



**Elbow 45°**

SDR-11				
Dn	D	T	L	L1
50	66	8	54	25
63	79	8	54	25
75	91	8	60	30
90	110	10	68	40
110	132	11	74	40
125	151	13	80	40
140	166	13	75	35
160	190	15	95	50
200	238	19	105	55
225	267	21	110	65
250	294	22	125	63
315	375	30	135	70
355	419	32	140	70
400	472	36	145	75
500	587	43.5	151	85
630	735	55	185	110



**End Cap**

SDR-11					
Dn	D	T	L	L1	L2
50	64	7	80	58	35
63	79	8	82	65	33
75	95	10	100	68	45
90	110	10	95	75	40
110	134	12	103	78	40
160	190	15	145	110	75
200	236	18	165	123	80
250	290	20	165	123	75
315	370	28	190	152	95
400	470	35	205	160	78



**Reducing Tee**

SDR-11					
Dn	D	T	L	L1	L2
50*32	66	8	149	54	27
50*40	66	8	149	54	27
63*32	79	8	165	55	28
63*40	79	8	165	55	28
63*50	79	8	165	55	28
75*40	93	9	184	60	29
75*50	93	9	184	60	29
75*63	93	9	184	60	29
90*50	110	10	213	70	40
90*63	110	10	213	70	40
90*75	110	10	213	70	40
110*50	134	12	214	75	40
110*63	134	12	214	75	40
110*75	134	12	214	75	40
110*90	134	12	241	75	40
125*75	151	13	260	80	40
125*90	151	13	260	80	40
125*110	151	13	260	80	40
140*90	168	14	281	85	40
140*110	168	14	281	85	40
160*50	192	16	263	93	50
160*63	192	16	263	93	50
160*75	192	16	263	93	50
160*90	192	16	315	93	50
160*110	192	16	315	93	50
160*125	192	16	315	93	50
160*140	192	16	315	93	50
200*50	240	20	295	104	55
200*63	240	20	295	104	55
200*75	240	20	295	104	55
200*90	240	20	295	104	55
200*110	240	20	295	104	55
200*125	240	20	360	104	55
200*160	240	20	360	104	55
225*90	265	20	395	120	55
225*110	265	20	395	120	55
225*160	265	20	395	120	55
225*200	265	20	395	120	55
250*75	296	23	354	125	63
250*90	296	23	354	125	63
250*110	296	23	354	125	63
250*125	296	23	354	125	63
250*160	296	23	437	125	63
250*200	296	23	437	125	63
315*110	371	28	398	133	70
315*160	371	28	398	133	70
315*200	371	28	518	133	70
315*250	371	28	518	133	70
355*250	419	32	577	140	70
355*315	419	32	577	140	70



**Reducing Tee**

SDR-11					
Dn	D	T	L	L1	L2
400*110	472	36	338	143	70
400*160	472	36	338	143	70
400*200	472	36	338	143	70
400*250	472	36	623	143	70
400*315	472	36	623	143	70
450*110	525	37.5	703	156	75
450*160	525	37.5	703	156	75
450*200	525	37.5	703	156	75
450*250	525	37.5	703	156	75
450*315	525	37.5	703	156	75
450*400	525	37.5	703	156	75
500*400	587	43.5	725	151	85
560*110	640	43	803	168	100
560*160	640	43	803	168	100
560*200	640	43	803	168	100
560*250	640	43	803	168	100
560*315	640	43	803	168	100
560*400	640	43	803	168	100
630*110	742	56	705	185	110
630*160	742	56	705	185	110
630*200	742	56	705	185	110
630*250	742	56	705	185	110
630*315	742	56	705	185	110
630*400	742	56	705	185	110



**Flange Adapter**

SDR-11						
Dn	D	T	T1	L	L1	L2
50	66	8	19	78	71	37
63	79	8	21	77	71	38
75	93	9	20	77	70	40
90	110	10	22.5	85	77	45
110	132	11	26	104	95	55
125	149	12	26	105	95	57
140	168	14	24	107	94	56
160	190	15	28.5	125	113	65
200	238	19	31	123	110	60
225(8)	265	20	33	122	109	61
225(12)	265	20	33	122	109	61
250	290	20	36	150	140	80
280	320	20	37	150	145	90
315	355	20	39.5	155	145	95
355	405	25	41	155	135	80
400	456	28	41	155	133	76
450	498	24	45	155	140	77
500	552	26	56	190	170	105
560	620	30	65	205	180	95
630	680	25	60	205	190	115



**Coupler**

B type

SDR-11					
Dn	D	T	L	L1	L2
50	62.5	6.5	94	45	22.1
63	77	7.5	105.5	53	22.1
75	92	8.6	112	54	22.1
90	108	10	121.5	60	30
110	132.5	11.3	141	70	37.5
160	189	14.6	162	77	37.5
200	235.5	18.1	184	90	45
250(10Kg)	286	18	193.5	96	45
250(16Kg)	295.5	22.7	205	101.5	54
315(10Kg)	353	20	220	108.5	45
315(16Kg)	394	29.2	236	116	51



**Elbow 90°**

B type

SDR-11				
Dn	D	T	L	L1
110	134	12	66.5	35
160	189	15.5	77	37.5
200	235.5	18.5	90	45



**Flange Adapter**

B type

SDR-11						
Dn	D	T	T1	L	L1	L2
110	132	10	22	90	85	50
160	191	14	30	110	103	45
200	235	18	32	113	105	50



**Equal Tee**

B type

SDR-11					
Dn	D	T	L	L1	L2
50*32	63	6	137	50	22.1
50*40	63	6	137	50	22.1
50*50	63	6	137	50	22.1
63*40	78	7	157	50	22.1
63*50	78	7	157	50	22.1
63*63	78	7	157	50	22.1
75*50	93	8	175	50	22.1
75*63	93	8	175	50	22.1
75*75	93	8	175	50	22.1
90*50	109	9	195	55	30
90*63	109	9	195	55	30
90*75	109	9	195	55	30
90*90	109	9	195	55	30
110*50	132.5	11.7	200	68	37.5
110*63	132.5	11.7	200	68	37.5
110*75	132.5	11.7	200	68	37.5
110*90	132.5	11.7	226.5	68	37.5
110*110	132.5	11.7	226.5	68	37.5
160*50	189	15.5	218.5	76	37.5
160*63	189	15.5	218.5	76	37.5
160*75	189	15.5	218.5	76	37.5
160*90	189	15.5	247	79	37.5
160*110	189	15.5	247	79	37.5
160*160	189	15.5	289	79	37.5
200*50	237	19	245	90	45
200*63	237	19	245	90	45
200*75	237	19	245	90	45
200*90	237	19	280	93	45
200*110	237	19	280	93	45
200*160	237	19	348	93	45
200*200	237	19	348	93	45



**Cross Fitting**

SDR-11				
Dn	D	T	L	L1
110	132	10.5	251	70
160	186	14	325	80
200	236	16.5	384	90



**Coupler**

Dn	D	T	L	L1	L2
50	70	10	111	55	34
63	85	11	112	56	34
75	96	11	124	62	34
90	114	12	139	69	40
110	138	14	149	74	40
125	165	20	167	83	40
160	200	20	173	86	45
200	252	26	205	102	53
250	304	27	233	116	60
315	383	34	266	128	68



**Reducer**

Dn2/Dn1	D2/D1	T2/T1	L	L2/L1	L4/L3
50 /110	70 /138	10 /14	145	55 /75	35 /45
75 /110	99 /138	12 /14	145	60 /75	35 /40
90 /110	114 /138	12 /14	150	65 /75	40 /45
90 /160	118 /200	14 /20	183	70 /90	35 /40
110 /160	138 /200	14 /20	186	75 /90	50 /50
110 /200	138 /248	14 /24	205	75 /100	50 /60
160 /200	200 /250	20 /25	221	90 /103	50 /60
160 /250	200 /306	20 /28	256	95 /125	45 /60
200 /250	250 /306	25 /28	262	105 /120	52 /65
250 /315	306 /383	28 /34	288	124 /135	55 /62



**Elbow 90°**

Dn	D	T	L	L1
50	72	11	55	30
63	85	11	56	34
75	101	13	61	36
90	118	14	70	40
110	138	14	75	40
160	200	20	95	50
200	250	25	100	55
250	306	28	125	65
315	381	33	138	61



**Elbow 45°**

Dn	D	T	L	L1
110	138	14	75	40
160	200	20	95	50
200	250	25	100	55
250	306	28	125	65
315	381	33	136	61



**Equal Tee**

Dn	D	T	L	L1	L2
110	138	14	240	75	40
160	204	22	313	93	48
200	252	26	360	105	58
250	306	28	438	125	65
315	383	34	511	134	61



**Reducing Tee**

Dn	D	T	L	L1	L2
110*90	138	14	240	75	40
160*110	204	22	313	93	48
200*110	252	26	360	105	58
200*160	252	26	360	105	58
250*110	306	28	438	125	65
250*160	306	28	438	125	65
250*200	306	28	438	125	65
315*110	383	34	511	134	61
315*160	383	34	511	134	61
315*200	383	34	511	134	61
315*250	383	34	511	134	61



**Flange Adapter**

Dn	D	T	T1	L	L1	L2
110	138	14	22	105	95	55
160	196	18	32	125	112	60
200	240	20	35	125	105	55
250	300	25	38	150	137	75
315	365	25	42	171	161	100



**Coupler**

Double seal Coupler

Dn	D	T	L	L1	L2
50	68	9	100	49	18
63	81	9	120	59	20
75	93	9	144	70	20
90	112	11	170	83	25
110	136	13	183	90	35
160	194	17	197	97	35
200	240	20	230	113	46
250	292	21	260	128	50
315	375	30	276	137	60



**Elbow 90°**

Double seal Elbow 90°

Dn	D	T	L	L1
50	68	9	49	18
63	81	9	59	20
75	93	9	70	20
90	112	11	83	25
110	136	13	90	35
160	194	17	97	35
200	240	20	113	46
250	292	21	128	50
315	375	30	137	60



**Elbow 45°**

Double seal Elbow 45°

Dn	D	T	L	L1
50	68	9	49	18
63	81	9	59	20
75	93	9	70	20
90	112	11	83	25
110	136	13	90	35
160	194	17	97	35
200	240	20	113	46
250	292	21	128	50
315	375	30	137	60





**Equal Tee**

Double seal Equal Tee

Dn	D	T	L	L1	L2
50	68	9	180	49	18
63	81	9	210	59	20
75	93	9	255	70	20
90	112	11	310	83	25
110	136	13	331	90	35
160	194	17	415	97	35
200	240	20	496	113	46
250	292	21	565	128	50
315	375	30	650	137	60



**Reducing Tee**

Double seal Reducing Tee

Dn	Dn2/Dn1	D2/D1	T2/T1	L	L2/L1	L4/L3
63*50	50/63	68/81	9/9	120	49/59	18/20
75*50	50/75	68/93	9/9	130	49/70	18/20
75*63	63/75	81/93	9/9	160	59/70	20/20
90*63	63/90	81/112	9/11	160	59/83	20/25
90*75	75/90	93/112	9/11	170	70/83	20/25
110*75	75/110	93/136	9/13	175	70/90	20/35
110*90	90/110	112/136	11/13	190	83/90	25/35
160*90	90/160	112/194	11/17	225	83/97	25/35
160*110	110/160	136/194	13/17	230	90/97	35/35
200*110	110/200	136/240	13/20	265	90/113	35/46
200*160	160/200	194/240	17/20	275	97/113	35/46
250*160	160/250	194/292	17/21	290	97/128	35/50
250*200	200/250	240/292	20/21	305	113/128	46/50
315*200	200/315	240/375	20/30	335	113/137	46/60
315*250	250/315	292/375	21/30	350	128/137	50/60



**Flange Adapter**

Double seal Flange Adapter

Dn	D	T	L	L1	L2
50	68	9	77	73	33
63	81	9	77	73	37
75	93	9	77	73	37
90	112	11	85	80	40
110	136	13	105	98	43
160	194	17	110	102	46
200	240	20	115	105	48
250	292	21	140	135	55
315	375	30	145	140	60



**Flange Plate**

Nylon Coated, PN1.6Mpa

PE	Standard	φdn	φd	K	φE	N	Bolts
20	15	95	27	65	14	4	M12
25	20	105	32	75	14	4	
32	25	115	39	85	14	4	
40	32	135	47	100	18	4	M16
50	40	145	57	110	18	4	
63	50	160	70	125	18	4	
75	65	180	81	145	18	4	
90	80	195	97	160	18	8	
110	100	215	116	180	18	8	
125	100	215	135	180	18	8	M20
140	125	245	150	210	18	8	
160	150	280	170	240	22	8	
180	150	280	190	240	22	8	
200	200	335	222	295	22	12	
225	200	335	235	295	22	12	
250	250	400	276	355	26	12	M24
280	250	400	292	355	26	12	
315	300	450	328	410	26	12	
355	350	510	380	470	26	16	M27
400	400	570	430	525	30	16	
450	450	630	484	585	30	20	M30
500	500	705	534	650	33	20	
560	600	830	634	770	36	20	M33
630	600	830	634	770	36	20	
710	700	900	724	840	36	24	M36
800	800	1010	824	950	39	24	
900	900	1110	930	1050	39	28	M39
1000	1000	1220	1025	1170	42	28	
1200	1200	1455	1260	1390	48	32	M45



**Female adapter**

SDR-11	
Dn	L
63	72
75	80
90	81
110	85

SDR-11	
Dn	L
63	72
75	80
90	81
110	85



**Male adapter**



**Flange Plate**

Nylon Coated, PN2.0Mpa

PE	Standard	φdn	φd	K	φE	N	Bolts
20	15	95	27	65	14	4	M12
25	20	105	32	75	14	4	
32	25	115	39	85	14	4	
40	32	135	47	100	18	4	M16
50	40	145	57	110	18	4	
63	50	160	70	125	18	4	
75	65	180	81	145	18	4	
90	80	195	97	160	18	8	
110	100	215	116	180	18	8	
125	100	215	135	180	18	8	
140	125	245	150	210	18	8	M20
160	150	280	170	240	22	8	
180	150	280	190	240	22	8	
200	200	335	222	295	22	8	
225	200	335	235	295	22	8	
250	250	390	276	350	22	12	
280	250	390	292	350	22	12	
315	300	440	328	400	22	12	
355	350	500	380	460	22	16	
400	400	565	430	515	26	16	
450	450	615	484	565	26	20	
500	500	670	534	620	26	20	
560	600	780	575	725	30	20	M27
630	600	780	650	725	30	20	
710	700	895	730	840	30	24	M30
800	800	1010	825	950	33	24	
900	900	1110	930	1050	33	28	M33
1000	1000	1220	1025	1160	36	28	
1200	1200	1455	1260	1380	39	32	M36



**PE/Steel adapter**

SDR-11	
Dn	L
75	80
90	80
110	84
160	90
200	90

Large size
355
400
450
500
560
630
710
800
900
1000
1200
1400



Large size Coupler



**Large size Elbow**

Large size

355

400

450

500

560

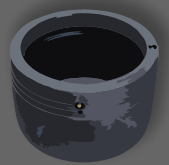
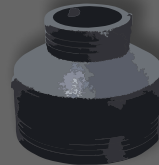
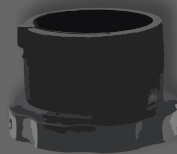
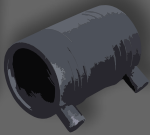
630

710

800

900

1000



**Hangzhou Welping Machinery Equipment Co., Ltd**

Phone: 00 86 571 89332538

E-mail: [top@welping.cn](mailto:top@welping.cn) Web: [www.welpingtool.com](http://www.welpingtool.com)

Office address: Room 1904 Building 1, Taifu Plaza, No. 1 Tonghui Middle Road,  
Xiaoshan District, Hangzhou

Factory address: No. 2 Jinyuan Road, Puyang Town, Xiaoshan District, Hangzhou, China